

# FJD CONSULTING

Inspiring Engineering Excellence through our People  
and Sustainable Stakeholder Relationships.



**DESIGN &  
CONSULTANCY  
EXPERTISE**

Delivering responsive,  
innovative and cost effective  
services since **2012**

## LOCATION

Service coverage  
UK wide



**COMPANY  
SIZE**

**37**

## DIVISIONS

Civil



Structural



Geotechnical



MET



## SECTORS

Rail



Highways



EV



Industrial



Renewables



## TRACK RECORD

**98%**

of our revenue is  
generated through  
repeat business

On average, we  
deliver  
schemes  
per client  
company

**7**

we collaborate with

**73%**

of our work comes from  
our collaboration with  
Tier 1 Contractors

**42%**

of our team have been  
with the business for 5  
years or more

## OUR SERVICES

1. Ancillary Civils
2. Bridges, Footbridges & Gantries
3. Mechanical, Electrical & Telecomms
4. Geotechnical Engineering
5. Carbon Assessments
6. BIM & Digital Engineering
7. FRP-Composites
8. Multidisciplinary Design Packages
9. Station & Cycle Shelters Surveys
10. Temporary Works
11. EV Charging Infrastructure



## PROJECTS

- TfW Core Valley Lines Civil Engineering Design;
- Bristol Temple Meads Roof Refurbishment Scheme;
- Polsloe Bridge Station Lighting Design;
- Porsche Centre South Lakes EV Charging Systems Infrastructure Design;
- Quakers Yard Station Redevelopment;
- DCL-56 Underbridge New Build;
- Tyla Coch Footbridge Parapet Extension & Strengthening.

## ACCREDITATIONS



## AWARDS

Finalist of 'Impact in Rail'  
Category at the NCE Awards

**2023**



Winner of 'Small-Medium  
Enterprise of the Year'

**2022**

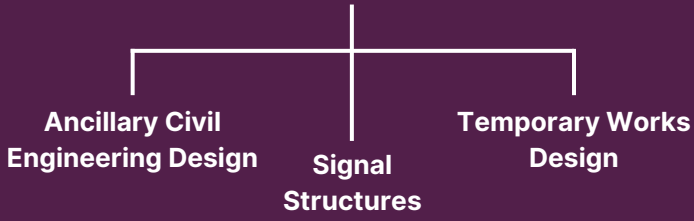


ICE Carbon Champion

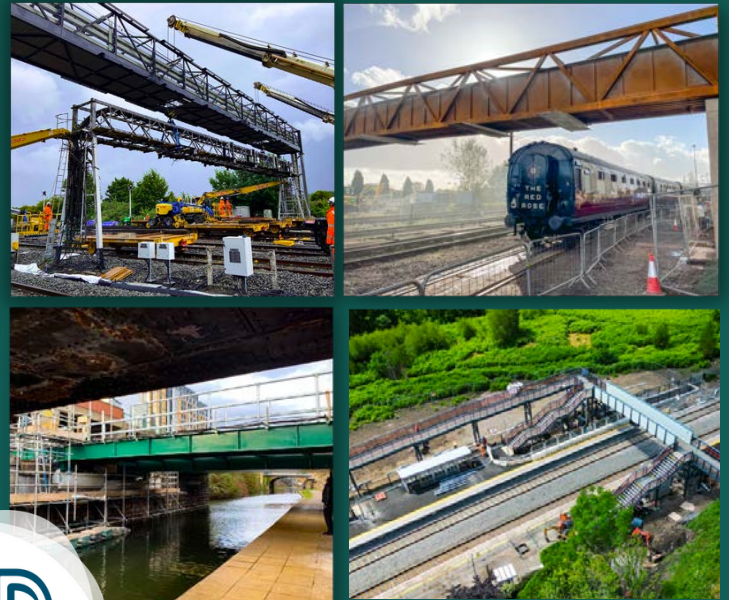
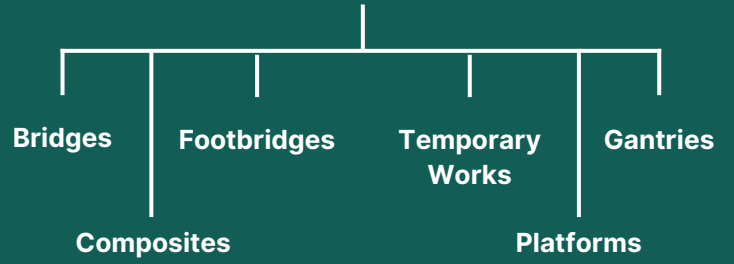
**2021**



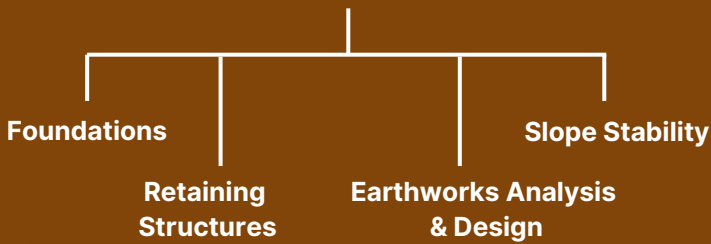
# CIVIL



# STRUCTURAL



# GEOTECHNICAL



# M&E & TELECOMMS

